

COMMUNITY

We're moving in!

INSIDE THIS ISSUE

- START Festival
- Living Centre Update
- Community Chest
- Education Update
- Paradigm Workshops
- Community Garden
- Crick Lab move
- Working with us

ABOUT THE CRICK

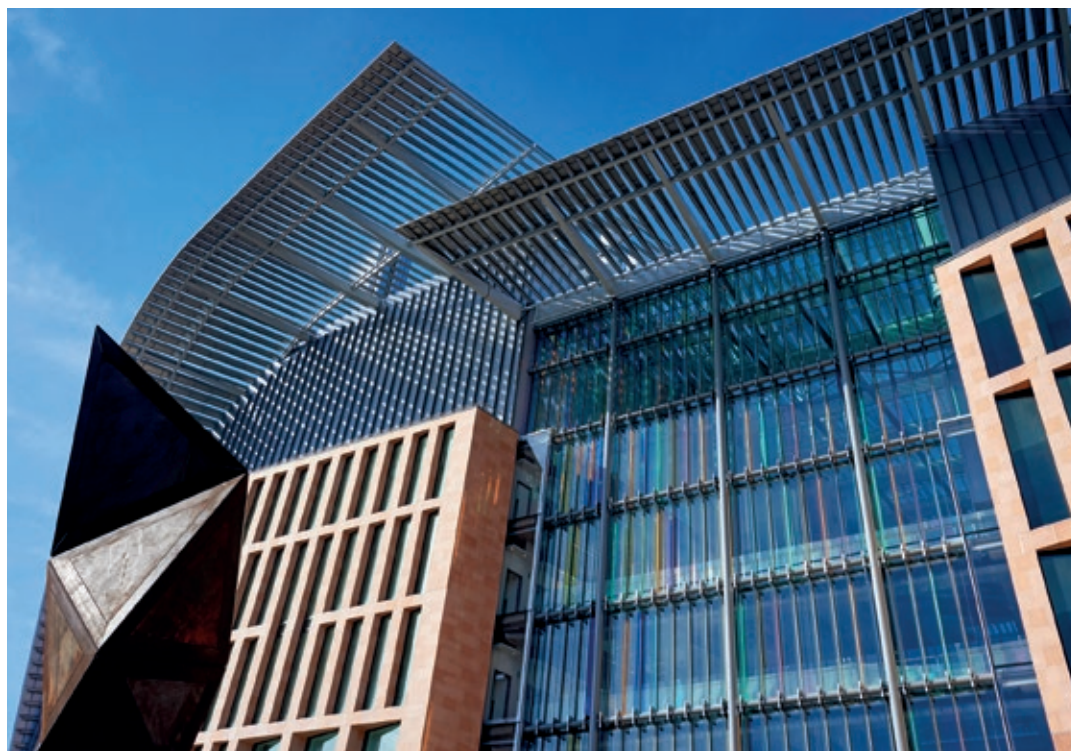
The Francis Crick Institute is a new medical research institute in Somers Town.

It's named after one of the UK's greatest scientists, who co-discovered the structure of DNA.

The institute is a partnership between the Medical Research Council, Cancer Research UK, the Wellcome Trust, UCL (University College London), Imperial College London and King's College London.

Discoveries made in the laboratories will speed up the development of treatments for major diseases such as cancer, heart disease and stroke.

The Francis Crick Institute will bring new jobs, community facilities and other benefits to Somers Town.



Above: The new building from Midland Road. © HOK

The new Crick Lab is now finished and over the next few months 1,300 scientists and other staff, their labs and equipment, will move into the building!

“This is a huge milestone – bringing all our staff under one roof means we can start working together much more closely, focusing on vital research to help tackle illnesses such as cancer, infection and neurodegenerative diseases,” said Katie Matthews, the Crick’s Director of Public Engagement.

“We would like to say a huge thank you to the local community for their fantastic support over the past five years. We now look forward to welcoming you into the Crick’s public spaces and sharing our science with you.”

Building the Crick has been a complex, challenging and exciting project – at the peak of the building programme the Crick was the biggest single project of its kind in the UK, with more than 1,200 workers on site.

The result is a spectacular, state-of-the-art laboratory, which also features public and community spaces. Located at the front of the Crick Lab on Midland Road are the Manby Gallery, where from September we will stage public events and exhibitions, and our Discovery Lab, which will open in January 2017 and offer Camden schoolchildren the chance to take part in an exciting science programme.

To the rear of the Crick Lab, on Ossulston Street, is the Living Centre. Opening in January 2017 and run by a group of community organisations, the Living Centre will provide a range of affordable services that help to improve health and wellbeing.

Keep an eye on our website for details of our public events programme – www.crick.ac.uk/news/events/.

For any questions about the Crick please email us – info@crick.ac.uk.

COMMUNITY GARDEN

The community garden on the corner of Ossulston Street and Brill Place is now open for all to enjoy. The plants are thriving, creating a colourful wildlife haven next to the Crick. The garden is being maintained by the London Wildlife Trust, who will be running a regular community gardening group and are looking for local volunteers to help out. Please just turn up or call 020 3796 2847 for more information.

Upcoming gardening sessions:

8 September, 11am-1pm

22 September, 11am-1pm – Special session: Learn about the plants and create labels.

15 October, 2-4pm

10 November, 2-4pm



How do we know what we know?

Coming up with the big questions in biology, collecting data, testing predictions, and ultimately understanding it all, is part of the scientific process. It is also a valuable skill-set, and as it turns out, a key part of the national curriculum in getting students to ‘Work Scientifically’.

Students from Parliament Hill and Maria Fidelis Catholic Schools have been working alongside the Crick’s education team to understand how scientists work, and why the scientific process is essential to making evidence based discoveries.

We were inspired by research in our labs on DNA damage and repair, and using UV LED torches and UV sensitive beads, students explored where UV light comes from, how it is measured, and why it can cause skin or DNA damage. Students used this information to design their own experiments looking at UV doses and different sunscreen SPF factors.

One student said, “I enjoyed finding out about SPFs because I had never really thought about it and it was really fun.”

“It was rewarding to see all the pupils plan and carry out the experiment and obtain their own set of results, and it was hard not to be touched by their excitement at making discoveries. It has been exciting working together with teachers and Camden Council in finding the most effective way of embedding the project within the curriculum. We’re now looking into ways of rolling out the project across Camden schools,” said Ivana Petrovska, Science Educator at the Crick.



Above: Students exploring DNA damage with the help of UV beads
© The Francis Crick Institute.

Under the sea

In May, our education team represented the Crick at the British Museum’s ‘Under the Sea’ day aimed at families affected by deafness.

The team delivered a series of activities themed around the science of light in biology. This included using sign language to explain how the GFP gene from jellyfish can be used to make Crick science experiments easier to see. Visitors, including the Mayor of Camden, had the opportunity to use UV light to find hidden sea-creatures in the depths of the museum; to see how fluorescence is used to track and identify cells within developing embryos; and even to make their own souvenir fluorescent jellyfish tea-towel. Our involvement in this event came about through recent collaborations with Frank Barnes School for Deaf Children. We have benefited from the sign language and deaf awareness training that they offer, and the pupils and teachers at this Camden school are now keen participants in our Education programme.

LIVING CENTRE UPDATE

Living Centre Partners, the community organisations that will run the community space in the Crick, are getting ready to open the Living Centre in early 2017.

Over the next few months they will be talking to local residents to make sure the Living Centre offers the services people want.

Please look out for the Living Centre newsletter, which will explain how you can get involved. For further information, email info.livingcentreparkers@somersetown.org.uk

Working with us

As the move to the Crick Lab gets underway, we have started to recruit for a number of positions, including the staff that will support our scientists and ensure that building operations run smoothly. As we promised, we have worked hard to recruit a number of these roles locally, and we are thrilled that nearly a third of all our service partner recruits live in the borough of Camden.

"I picked up a leaflet for the Somers Town Job Hub that mentioned a recruitment event taking place for jobs at the Crick. After meeting one of the management team and sending over my CV, I was interviewed. I was delighted to find out I'd been successful and I am now part of the Front of House Concierge team."

Georgia Robins, local resident

We advertise job vacancies with the Somers Town Jobs Hub (www.somerstown.org.uk/category/job-hub/) and KX Recruit (www.kingscross.co.uk/jobs-and-recruitment) and have held several jobs fairs and workshops with them. We'll be holding more jobs fairs and other events in the future.

We also advertise jobs on the Crick's website – www.crick.ac.uk/about-us/jobs-and-study/.

Our apprenticeship scheme for Camden residents is also under development and will launch in 2017. For more information, keep an eye on our website, and look out for updates in future newsletters.

Paradigm workshops

To celebrate the installation of Paradigm, the impressive new piece of public art at the front of the Crick, we teamed up with House of Illustration to run a series of creative workshops for local school children, the local community and Crick staff.

Led by professional illustrators Monique Jivram and Jhinuk Sarkar, and with support from Crick scientists, the workshops explored the intriguing geometry of the structure, and the ideas behind the sculpture. Participants made a range of artworks, from 2D thread drawings to 3D illustrated paper sculptures.

After one workshop a teacher commented, "As we walked past Paradigm today some of our students were counting the number of tetrahedrons, imagining the depth of the foundations and looking more closely at the design. The students really got a lot out of it."



Above: Colourful and creative artwork inspired by Paradigm © The Francis Crick Institute.

CRICK COMMUNITY CHEST

There is still time to apply for one of our Community Chest grants! We invite applications from local community groups and organisations for projects that help improve health and wellbeing in the local area. If you have a great idea but you are struggling to get it off the ground, we may be able to help with a small grant.

The deadline for applications for our next round of funding is Wednesday 21 September.

For more information or to request an application form, please call us on 020 3796 2847, or email info@crick.ac.uk.

The Crick's Community Chest is supported by the Rangoonwala Foundation.

Pipe cleaners and Playdoh



Above: Making a Playdoh pet brain. © Wellcome Trust Images.

Saturday 9th July saw the return of START Festival of Cultures. The Crick has been at START since 2009, and this year our staff were on hand to share some new and exciting hands-on science activities, exploring our brains and how they work.

One activity looked at how many nerve cells different organisms possess, ranging from humans to zebrafish, and fruit flies to roundworms. We also uncovered people's preconceptions about the brain with a quiz, giving them the chance to win a giant cuddly neuron!

With the help of Crick scientists, visitors were challenged to build a connectome out of pipe cleaners. Connectomes illustrate the ways in which neurons connect in the brain, and visitors to the stall discovered how these connections can be linked to your personality and thoughts. Younger visitors were asked to think about where their brain is, its different sections, and had endless fun making their very own pet brain out of Playdoh.

"Coming to the festival is one of the highlights of our year, because it gives us such a great opportunity to talk about our science with families who live just around the corner from the Crick. Not only can we bring our staff closer to residents to explain their fascinating research, but we can also show that we're here to support the local community," said Esther Osarfo-Mensah, Public Engagement Assistant at the Crick.



Above: The new lab is essentially complete, and we have started to move into the building.
© Wellcome Trust Images.

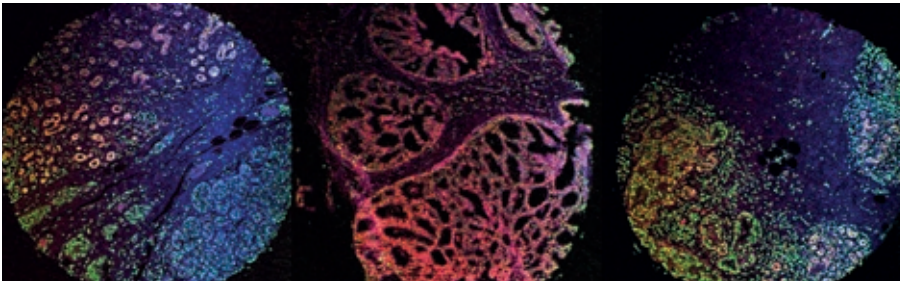
Crick Lab move

As Crick staff and their labs move into the building, deliveries to the Crick's loading bay on Brill Place will be carefully scheduled to keep noise and disruption to a minimum.

Deliveries will take place up to 10pm on weekdays and between 9am and 5pm at the weekend.

If there is a back-up of vehicles in Brill Place we will make sure that drivers turn off their engines.

We will continue to try and keep disruption to a minimum during the move. However, if you have any concerns please call our 24hour freephone hotline on 0808 165 0180. For non-urgent enquiries you may prefer to email us – migration@crick.ac.uk.



Above: A section of 'Not just a ball of cells' by Dr Paola Scaffidi.

HOW DO WE LOOK?

We are very excited to be opening our first ever public exhibition at the Crick. In 'How do we look?', we consider the what, why and how of scientific imaging through the eyes and words of our own scientists. Twelve unique images have been selected from our labs to explore role of images in discovery science. Free admission.

2ND NOVEMBER 2016 – 4TH FEBRUARY 2017

Opening hours

Wednesday 10:00 – 20:00, Thursday 10:00 – 15:00

Friday 10:00 – 17:00, Saturday 10:00 – 17:00

GET IN TOUCH

If you have any questions, please contact us.

Email: info@crick.ac.uk

Web: www.crick.ac.uk

Phone: 020 379 60000

24 hour

Hotline: 0808 165 0180

Facebook: facebook.com/thefranciscrickinstitute

Twitter: @thecrick

Post: The Francis Crick Institute
1 Midland Road, London,
NW1 1AT

This newsletter tells you about the Francis Crick Institute. If you would like a copy in Bengali, please send your name and address to info@crick.ac.uk.

এই সংবাদপত্রিকাটি আপনাদের দ্য ফ্রান্সিস ক্রিক ইন্সটিটিউট এবং ব্রিল প্লেস, সমারস টাউনে তাদের দ্বারা একটি মেডিকাল গবেষণা কেন্দ্র তৈরি করার পরিকল্পনার বিষয়ে আপনাকে জানায়। যদি আপনি বাংলায় একটি অনুলিপি চান, অনুগ্রহ করে ঠিকানায় বা info@crick.ac.uk-তে ইমেইল করে আপনার নাম আর ঠিকানা পাঠান।

Liquid nitrogen deliveries

The Crick has started to receive regular deliveries of liquid nitrogen. This extremely cold liquid is a vital tool for scientific research.

During the deliveries, there will be a visible white vapour in the air. This water vapour is completely harmless and is caused by the the temperature difference between the liquid nitrogen and the surrounding air.

The deliveries will be made from Ossulston Street, opposite the walkway between the Crick and the British Library.

If you have any questions please call our 24hour freephone hotline on 0808 165 0180 or email info@crick.ac.uk. Thank you for your continued patience.